

Patmore Heath

Patmore Heath is an outstanding example of grass heathland, now a scarce habitat in the south east. With its ponds, the reserve is rich in flora and insects.

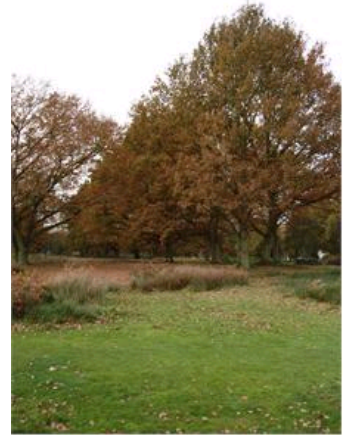
The heath is typified by wavy hair grass, red and sheep's fescue grasses and sweet vernal grass, with characteristic summer herbs such as heath bedstraw and sheeps sorrel. In damper areas the locally rare heath rush and galingale can be found.

The ponds support all three native newts, including the locally rare palmate newt, plus plants such as creeping jenny and lesser spearwort.

In early summer the reserve comes alive with insects such as dragonflies and small copper butterflies, while in winter redwings feed on hawthorn berries and green woodpeckers probe the ant-hills for food.

Patmore Heath is designated a [Site of Special Scientific Interest](#) (SSSI) and leased by the Trust from Albury Parish Council.

The management regime is designed to encourage diversity of species. The cessation of regular grazing allowed saplings to develop on the reserve but a return to regular sheep grazing and [scrub](#) control by local volunteers now help to maintain the heath.



- [Get driving directions](#)
- [Find nearby public transport](#)

How to Get Here

Location

Off Albury Road at Gravesend village

Directions

The reserve is 3km north of Little Hadham which is on the A120 between Bishop's Stortford and Standon. Upon reaching Gravesend, a lane on the right leads east to the reserve. Parking bays alongside the common.

Public Transport Links

Nearest bus stop and trains at Bishop's Stortford.

Walking Links

Map Reference

TL 443258

Visitor Guide

Size

9 hectares

Access to site

Accessible at all times

Access around site

Walking time

Advice on what to wear/bring

Good walking shoes recommended

Map of site (if available)