

## Purwell Ninesprings

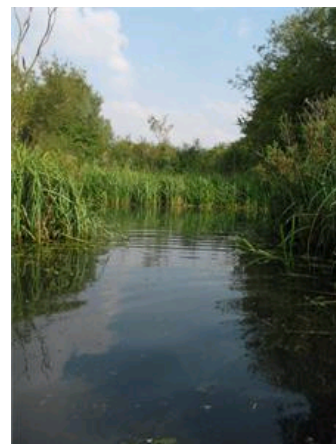
The open water attracts moorhen, mallard and in winter, teal. The reedbed is home to several pairs of reed warbler as well as water rails. In winter, buntings roost among the reeds and snipe feed in the meadow. The [fen](#) meadow is rich in wetland plants. Ragged Robin, marsh bedstraw, marsh marigold and meadow vetchling may be found amongst the dominant rushes and sedges.

The wet alder woodland is known as '[carr](#)' and other trees include ash, willow and oak. The wet ground condition encourages tussock sedge, yellow iris and water forget-me-not. Siskins feed on alder seeds in winter. The old hedgerow at the north end of the reserve includes hazel, hawthorn blackthorn and crab apple.

Kingfishers are breeding on the reserve having been absent from the area for some time. The ditches and water areas support water voles.

The reserve is held on a long lease from a private owner.

The management regime is designed to encourage diversity of species and focuses on maintenance of the ditches and wetland areas.



- [Get driving directions](#)
- [Find nearby public transport](#)

### How to Get Here

#### Location

Hitchin

#### Directions

Enter from the Gypsy Lane bridleway which joins the junction between Kingswood Avenue and Purwell Lane at its north end, and Wymondley Road at its south end. Small parking area at the Kingswood Avenue end.

#### Public Transport Links

Buses to Hitchin. Approximately 2km from Hitchin railway station.

#### Walking Links

#### Map Reference

TL 206293

#### Visitor Guide

#### Size

7 hectares

#### Access to site

Accessible at all times.

#### Access around site

#### Walking time

#### Advice on what to wear/bring

Wellingtons recommended. especially in winter.

#### Map of site (if available)

