

Corporate Support

Your opportunity to invest in the future of local wildlife and wild places, and contribute to a healthier environment for everyone

Your company has a significant role in the local community, including caring for the local environment. By supporting Herts and Middlesex Wildlife Trust (HMWT) your business will play an important part in our vision to protect local wildlife, and help to reconnect people with their environment.

By joining us, you will benefit from:

- A positive association with a highly successful and well regarded wildlife charity
- Increased brand awareness among our growing membership (over 21,000 local people)
- Increased engagement with staff, partners, customers and general public

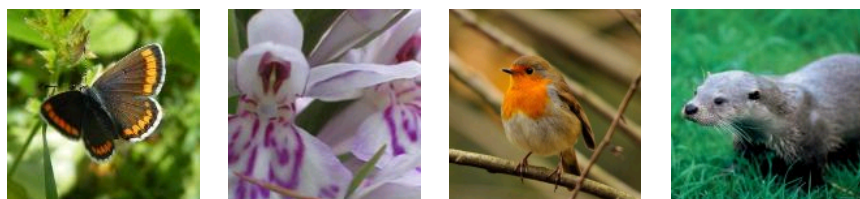
There are many opportunities for your company to get involved and work in partnership with us. These include:

- [Corporate Membership](#)
- [Corporate Work Parties](#)
- [Support a Local Project](#)
- [Gifts in Kind](#)



[Corporate Membership Booklet](#)

If you would like to discuss how your company can support us, please contact our Fundraising Officer, Sarah Mee on 01727 858901 ext. 242 or email sarah.mee@hmwt.org.



- [Corporate Membership](#)
Make wildlife and the environment your business
- [Developing a Partnership](#)
Your opportunity to invest in the future of local wildlife and wild places, and contribute to a healthier environment for everyone
- [Corporate Work Party](#)
Your opportunity to make a difference to local wildlife...get out of the office and into the dirt!
- [Work Party Feedback](#)
Have you been on one of our Corporate Work Parties recently?
- [Corporate e-Newsletter 2011](#)
Help us to create the perfect e-newsletter!
- [Support a Local Project](#)
Invest directly in your local environment and the well-being of the local community
- [Charity of the Year](#)
Your chance to work with HMWT as your company's 'chosen charity' and directly invest in the future of your local wildlife and wild places