



Herts and  
Middlesex



Wildlife  
Watch

## Duck Detectives

### Background information

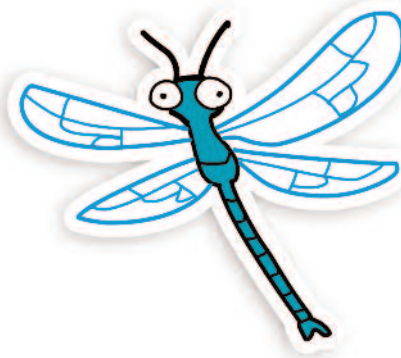
In the UK we have many different species of duck. Some live here all year round and others come here just for the winter. With so many ducks about, winter is a great time to learn how to identify them. Each species can be identified by its plumage. Males are usually more colourful than females and so are a good place to start. Females are often a mottled brown colour which means they are camouflaged when sitting on the nest.

One way to identify the species is to sketch it and note the different colours in its plumage. You can then look it up in a bird identification guide back at home or at school.

### What you will need

1. A lake with plenty of ducks and better still, one with hides!
2. Binoculars – enough to share between pairs or small groups.
3. Duck templates (see additional sheets 3a for KS1 or 3b for KS2).
  - \*\* If you prefer, the children can draw their own ducks from scratch.
4. Clipboards, colouring pencils or pens.
5. Warm clothing – to keep you warm as you draw!
6. Bird identification guide (see overleaf for suggestions).

\*\* Try not to let the children look at the guides until they have finished their sketches!



Now turn over...



for further instructions!



Herts and Middlesex



wildlife watch

# Duck Detectives

## Instructions

Younger children and KS1

1. Give each child a clipboard with a copy of the duck template and colouring pencils.
2. Hand out the binoculars between pairs or small groups.
3. Ask them to observe the different ducks on the lake and choosing one duck, colour in the template.
4. Using the bird guides, get the children to match their drawings to the correct duck.
5. Ask the children to sort the duck drawings into groups, explaining why they have grouped them together.



## Instructions

Older children and KS2

1. Follow steps 1-2 in KS1 instructions.
2. Get the children to look at several ducks, colour in the templates and make notes.
  - \*\* If not using colouring pencils, label the colours and patterns on each part of the duck. The colouring could be done back in the classroom.
3. Using the bird guides, ask the children to identify the different species drawn.
4. Back in the classroom, ask the children to do a bit of research or use the bird guides to answer the questions at the bottom of each sheet.
5. Using their drawings, ask the children to write their own descriptions for each duck.



## Information for Teachers

### National Curriculum Links – Science

**KS1 POS** Observe closely using simple equipment. Identify and classify. Gather and record data to help answer questions (use simple features to compare living things, decide how to sort them into groups, collect and record simple data, talk about what they have found).

**Y1 POS** Identify and name a variety of common animals. Describe and compare the structure of common animals (use the local environment to answer questions about animals and their habitats).

**Y2 POS** Describe how different habitats provide for the basic needs of animals and plants and how they depend on each other.

**Y4 POS** Recognise that living things can be grouped in different ways. Explore the use of classification keys to group, identify and name a variety of living things in their local and wider environment.

**Y6 POS** Identify how animals are adapted to suit their environment in different ways.

