



Herts and Middlesex



Wildlife Watch

Winter Wildfowl Spotting Challenge

Background information

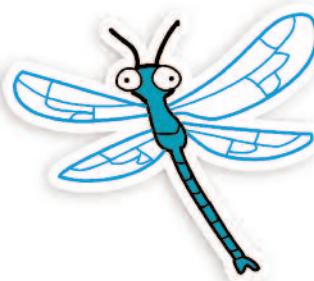
In the UK we have many different species of duck. Some live here all year round and others come here just for the winter. With so many ducks about, winter is a great time to get out and learn how to identify them. Each species can be identified by its plumage. Males are usually more colourful than females and so are a good place to start. Females are often a mottled brown colour which makes them camouflaged when sitting on the nest.

Activity objectives

This activity aims to get children to look closely at and appreciate our local wildlife, see how many species there are and to understand the differences between them.

What you will need

1. A lake with plenty of ducks and better still one with hides!
2. Binoculars – enough to share between pairs or small groups.
3. 'Winter Wildfowl Spotting Challenge' sheets (9a – printed or photocopied in colour).
4. Clipboards, pens.
5. Warm clothing – to keep you warm as you look for the birds!



Now turn over...



for further instructions!



Herts and Middlesex



wildlife watch

Winter Wildfowl Spotting Challenge

Instructions

1. Give each child a clipboard, 'Spotting Challenge' sheet and pen.
2. Hand out the binoculars between pairs or small groups.
3. Go for a walk around the lake, stopping in the hides to see how many of the birds on the sheet the groups can find.
 - ** If you see any other birds on the way, make a note of them on the back of your sheet!
4. At the end of the walk bring the group together to find out how many different species they saw.



Follow up

1. Research the different species found back in the classroom and determine which are migrants and which are resident all year round.
2. Combine this with game 2 ('Wildfowl Migration Game'), game 3 ('Duck Detectives') or game 10 ('Migration and Habitat Quiz').



Great crested grebe

Information for Teachers

National Curriculum Links – Science

KS1 POS Observe closely using simple equipment. Identify and classify. Gather and record data to help answer questions (use simple features to compare living things, decide how to sort them into groups, collect and record simple data, talk about what they have found).

Y1 POS Identify and name a variety of common animals. Describe and compare the structure of common animals (use the local environment to answer questions about animals and their habitats).

Y2 POS Describe how different habitats provide for the basic needs of animals and plants and how they depend on each other.

Y4 POS Recognise that living things can be grouped in different ways. Explore the use of classification keys to group, identify and name a variety of living things in their local and wider environment.

Y6 POS Identify how animals are adapted to suit their environment in different ways.

